

Create a direct descendants GEDCOM file using RootsMagic Essentials (free version)

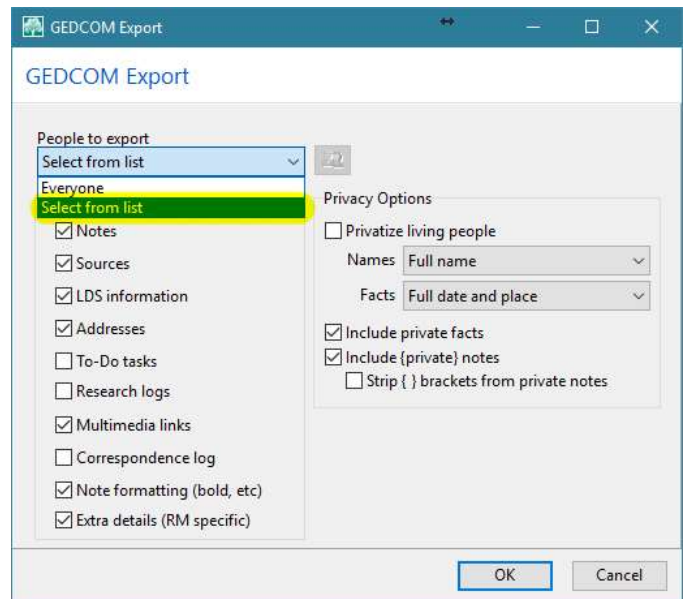
Open RootsMagic Essentials.

Open the desired RootsMagic file (*.rmgc) if it did not automatically open.

To begin the export, click **File** in the menu and select **Export...**

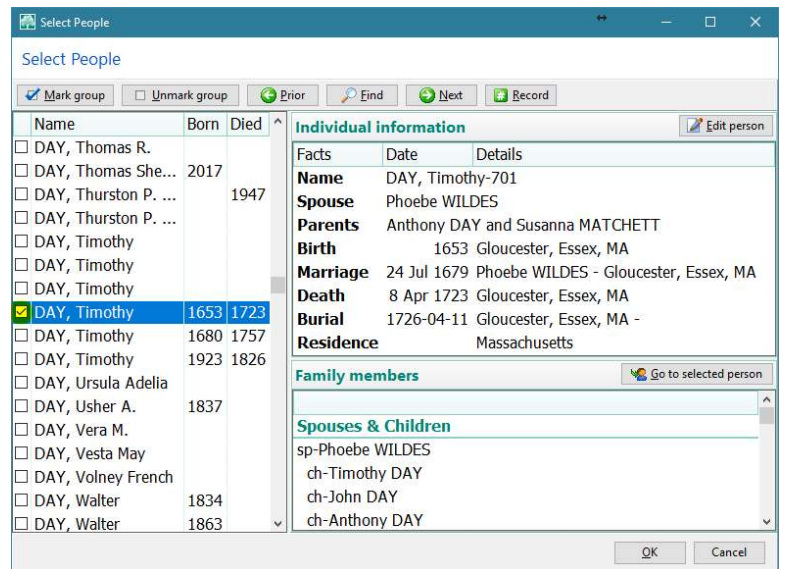


In the “People to export” dropdown list, select “Select from list”

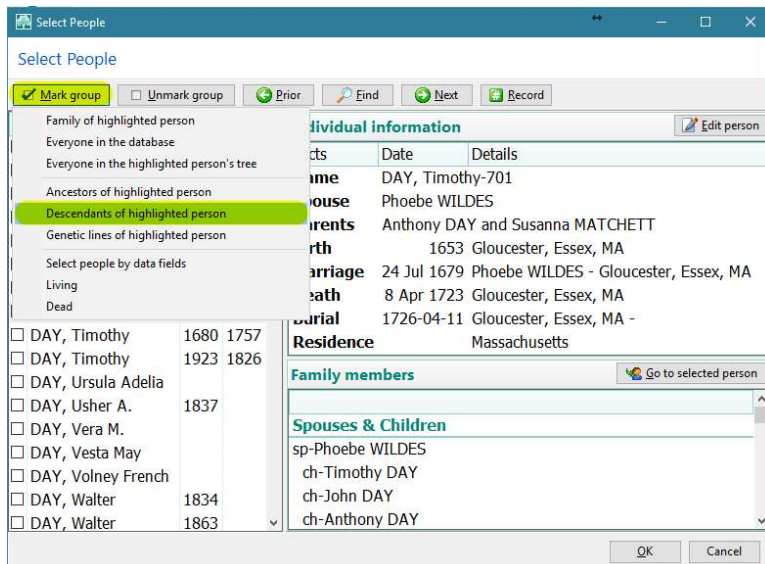


In the Select People dialog box, find and select the distant ancestor from whom you want to export all descendants.

In this example, Timothy Day has been selected. It will only be his descendants that will be exported.



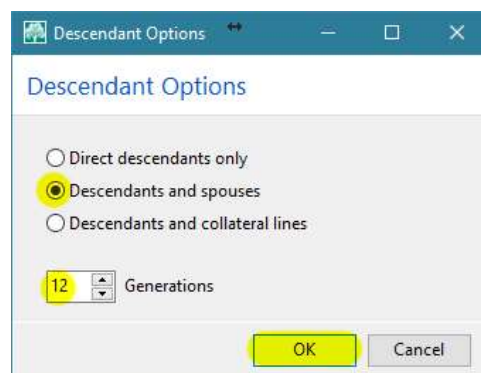
Click the **Mark group** button and select **Descendants of highlighted person**.



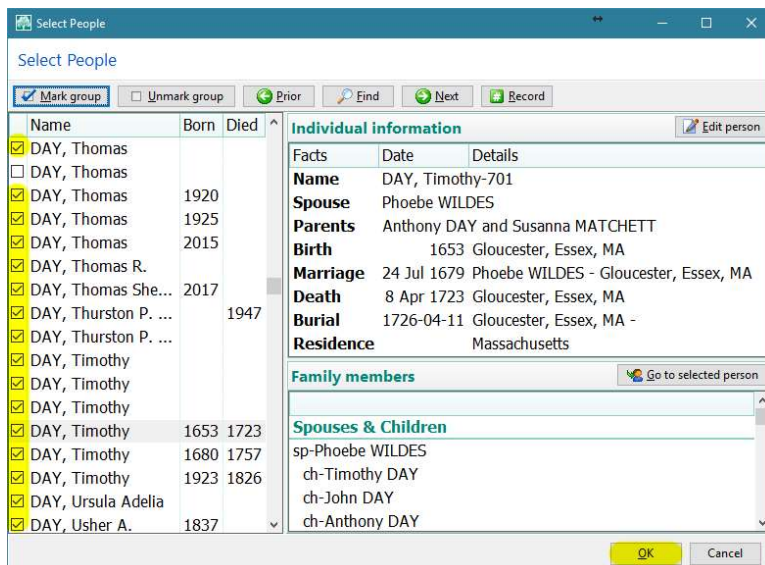
In the Descendant Options window, select the **Descendants and spouses** option button.

Select 12 generations (or more, if needed).

Click the **OK** button.



All direct descendants and their spouses will now be selected in the Select People window; click **OK**

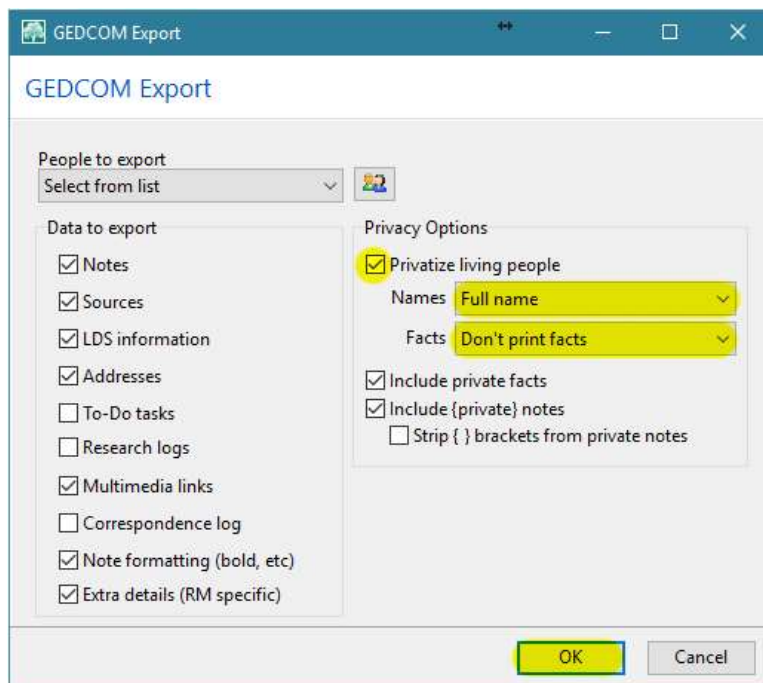


At the GEDCOM Export window, select the **Privatize living people** checkbox.

Select **Full name** from the “Names” dropdown list.

Select **Don't print facts** from the “Facts” dropdown list.

Click the **OK** button



In the Save As dialog box, navigate to a location in which to save the GEDCOM file.

Enter a filename, and click the **Save** button.

